



### Promoting Safe and Stable Families...

Georgia's Promoting Safe and Stable Families program provides federal funding, training and technical assistance to community-based, non-profit organizations to help vulnerable families stay together. Assistance includes services to improve parenting skills, help families in crisis, and reunify families whose children have been placed in foster care. When children cannot be safely reunited with their families, the program works to promote the adoption of children out of the foster care system.

### Service objectives...

#### Family Support Services

To prevent child abuse and neglect among families at risk through the provision of supportive family services.

#### Family Preservation Services

To assure children's safety within the home and preserve intact families in which children have been abused or neglected, when the family's problems can be effectively addressed.

#### Time-Limited Reunification Services

To address the problems of families whose children have been placed in foster care so that reunification may occur in a safe and timely manner.

#### Adoption/Foster Care Support Services

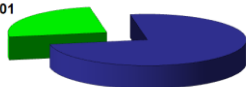
To support foster and adoptive families by providing support services so that they can make a lifelong commitment to their children.

### Sharing the Responsibility...

**16** programs serving families in **13** counties

#### Federal and Community

Community Match  
\$240,101

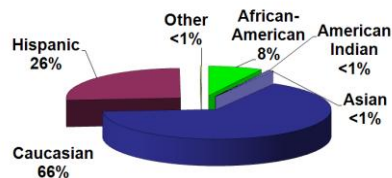


Federal Award  
\$720,302

### Our Families...

**1,425** Families Served

#### Race/Ethnicity



**52%** single parent households  
(single, separated, widowed or divorced)

**47%** two parent households  
(married or cohabitating)

**77%** have a high school education or less

**67%** employed full/part-time

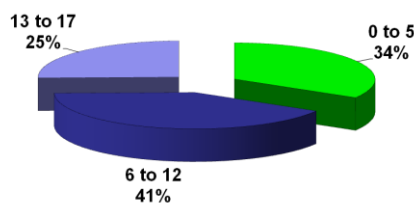
**62%** income less than \$20,000

### Our Children...

**2,590** Children Served

**84%** of children live with a biological parent or other relative

#### Children by Age



#### Child Welfare Involvement

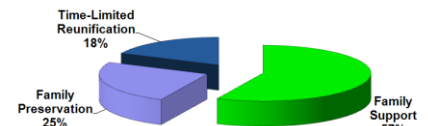
**58%** at-risk for Child Protective Services (CPS) intervention

**21%** at-risk for foster care placement

**20%** in foster care

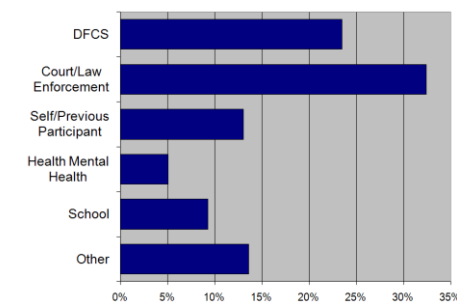
### Resource Allocation...

#### Network Resource Allocation



### Serving Our Community...

#### Primary Referral Sources<sup>†</sup>



<sup>†</sup>Includes TANF, Diversion, CPS, and Placement referrals

### Meeting the Need...

#### Reasons for Referral

Child Abuse & Neglect	37%
Therapeutic/Crisis Intervention	36%
Domestic Violence	36%
Parenting Skills	30%
Substance Abuse TX/Recovery Support	10%
Teen Pregnancy	5%
Academic Support	4%

### Producing Results\*

**1,338** Children protected from abuse and neglect, remain safely in their home

**277** Children are in a stable foster or relative home

**100** Children's family relationships and connections were preserved

\* Families who completed services