



Promoting Safe and Stable Families...

Georgia's Promoting Safe and Stable Families program provides federal funding, training and technical assistance to community-based, non-profit organizations to help vulnerable families stay together. Assistance includes services to improve parenting skills, help families in crisis, and reunify families whose children have been placed in foster care. When children cannot be safely reunited with their families, the program works to promote the adoption of children out of the foster care system.

Service objectives...

Family Support Services

To prevent child abuse and neglect among families at risk through the provision of supportive family services.

Family Preservation Services

To assure children's safety within the home and preserve intact families in which children have been abused or neglected, when the family's problems can be effectively addressed.

Time-Limited Reunification Services

To address the problems of families whose children have been placed in foster care so that reunification may occur in a safe and timely manner.

Adoption/Foster Care Support Services

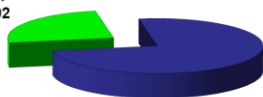
To support foster and adoptive families by providing support services so that they can make a lifelong commitment to their children.

Sharing the Responsibility...

5 programs serving families in **3** counties

Federal and Community

Community Match
\$73,692

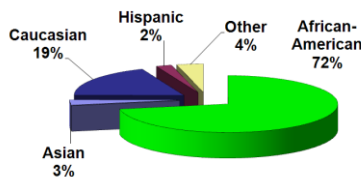


Federal Award
\$221,075

Our Families...

862 Families Served

Race/Ethnicity



71% single parent households
(single, separated, widowed or divorced)

28% two parent households
(married or cohabitating)

70% have a high school education or less

47% employed full/part-time

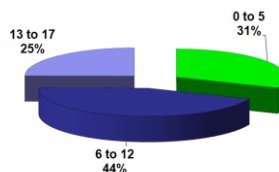
72% income less than \$20,000

Our Children...

1,583 Children Served

86% of children live with a biological parent or other relative

Children by Age



Child Welfare Involvement

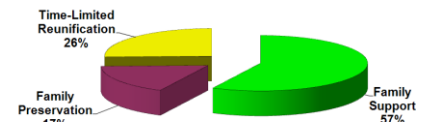
45% at-risk for Child Protective Services (CPS) intervention

2% at-risk for foster care placement

51% in foster care

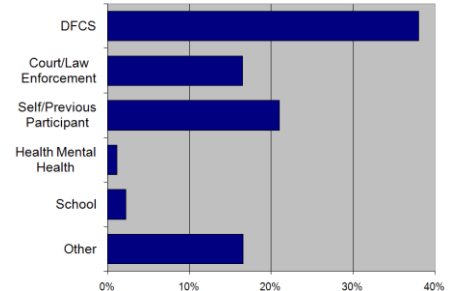
Resource Allocation...

Network Resource Allocation



Serving Our Community...

Primary Referral Sources[†]



[†]Includes TANF, Diversion, CPS, and Placement referrals

Meeting the Need...

Reasons for Referral

Relative Caregiver Support	38%
Parenting Skills	19%
Therapeutic/Crisis Intervention	14%
Child Abuse & Neglect	12%
Domestic Violence	11%
Life Skills	5%
Substance Abuse TX/Recovery Support	2%
Academic Support	1%
Teen Pregnancy	1%

Producing Results*

927 Children protected from abuse and neglect, remain safely in their home

95 Children are in a stable foster or relative home

94 Children's family relationships and connections were preserved

* Families who completed services